



TOILET PARTITIONS



AccurateTM

ACCURATE PARTITIONS

Since 1957, Accurate Partitions Corp. has been providing high-performance toilet partitions that meet or exceed specifications, require little maintenance, withstand the rigors of some very difficult environments, and provide a lifetime of low-cost of ownership.

We take pride in the fact that we were the first to use the powder coating process — bringing to market a more durable product made in a more environmentally friendly manner — and the developers of the ADA Paddle Handle — providing universal access and less cost for building owners. Plus, with the recent introduction of AccPack™ Protected Shipping, we have revolutionized how Powder Coated and Stainless Steel partitions are shipped to you, so that you receive them damage-free.

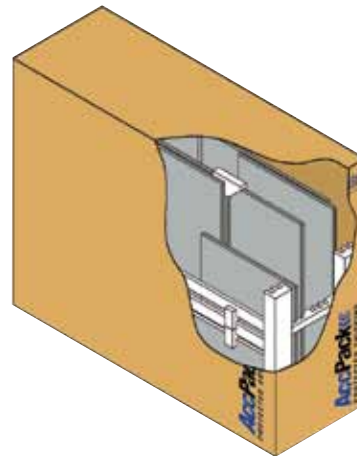
At Accurate Partitions, we are committed to doing our part in saving our planet. That's why all our products contain post-industrial material. Plus, most of our products even contain post-consumer material.

With Accurate's full line of partitions, you are certain to find the right partition to fit your application. Be sure to check out pages 10 – 11 for our **Materials Selection Guide** to assist you in your decision. Or visit our website, www.accuratepartitions.com, where you will find all the information you need to make the product selection and specification even easier.

Other Accurate Programs to Save You Time and Money



AccPack Packaging — This revolutionary packaging protects your Powder Coated or Stainless Steel partitions from the bumps and bruises frequently associated with shipping partition orders.



Action Configurator — Leading the industry with the most advanced technology. Quote different materials at one time. Prepare layouts and release for immediate fabrication.



Accurate Express — Solid Plastic, Powder Coated or Stainless Steel partitions ready to ship **within 48 hours**.

For more information on all these programs, visit accuratepartitions.com

ACCURATE MATERIALS

Solid Plastic

Solid Plastic partitions are designed for high-traffic public facilities, parks and schools as well as humid locations such as locker rooms with showers. Since they are 100% water resistant, they are the ideal choice where low maintenance and durability are required.



Powder Coated Steel

Accurate pioneered the use of powder coated steel toilet partitions, which have become the standard for durable quality at an affordable price.



Stainless Steel

Stainless steel partitions fit the décor of most bathroom facilities. They easily match other restroom accessories and are meant to last for years. Strength combined with sophisticated resilience.



Phenolic – Black Core

Phenolic material provides superior strength, durability and moisture resistance plus a broad variety of patterns and colors. Use phenolic partitions where vandalism is a problem.



Phenolic – Color-Thru

Phenolic Color-Thru adds value to regular Phenolic, with constant color throughout. Since it's Phenolic, it's also highly resistant to impact, scratches and graffiti.



Plastic Laminate

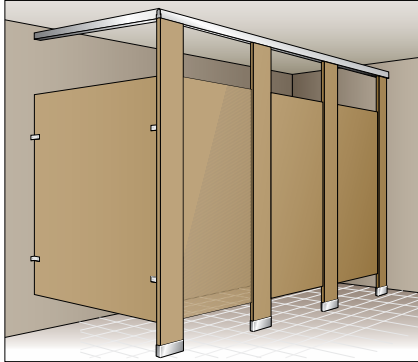
Plastic laminate partitions offer you a wide range of looks for standard applications at an economical price.



ACCURATE STYLES

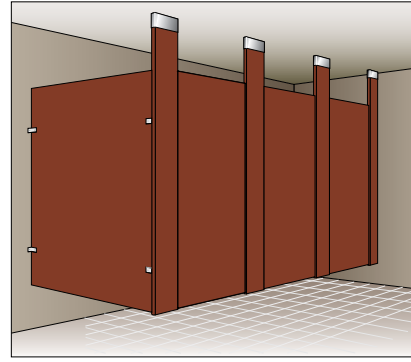
Floor Anchored/Overhead Braced

This economical and sturdy mounting style installs just about anywhere. An anodized aluminum antigrip headrail secures partitions firmly to the walls.



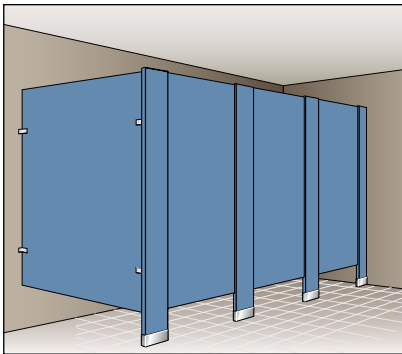
Ceiling Hung

This mounting style provides unobstructed floor area for a clean look and economical maintenance. When used together with wall-hung fixtures, the entire floor is accessible for efficient cleaning. Structural steel ceiling supports are necessary to assure proper installation.



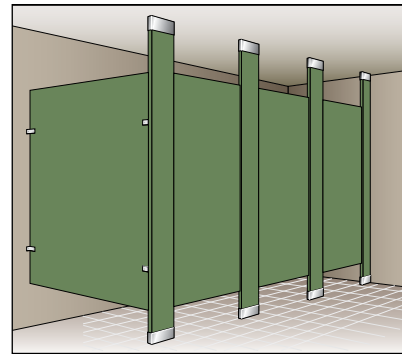
Floor Anchored

The flush top line of this mounting style gives a modern, contemporary appearance — especially suitable for low-ceiling washrooms. Simplified construction permits ease of installation anywhere. For concrete floors only: 2" minimum penetration into floor required.



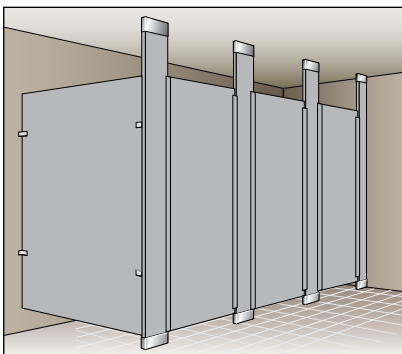
Floor to Ceiling Anchored

This mounting style is extremely stable and durable as pilasters are anchored into both the concrete floor and the structural ceiling support. Recommended for busy washrooms where abusive treatment is possible and vandal resistance is critical.



Ultimate Privacy™

Our Ultimate Privacy design features doors and panels up to 72" tall and eliminates sightlines into the compartments around the doors. Perfect for environments where additional privacy is desired. Available in all four mounting styles.



Urinal and Privacy Screens

Wall-Hung Screens

Available in 3 standard heights: 42", 48" and 58"

Post-Mounted Screens

1 $\frac{3}{4}$ " sq. aluminum post in Floor Mounted or Floor to Ceiling Mounted.

Pilaster-Mounted Screens

Available in Floor Mounted, Ceiling Hung, Floor to Ceiling or Overhead Braced.

SOLID PLASTIC (HDPE)

Solid Plastic partitions are manufactured of high density polyethylene (HDPE) resins with homogenous color throughout and a lightly textured finish to hide the effect of vandalism. Solid plastic is attractive as well as environmentally safe and sanitary. It is completely water resistant and unaffected by steam or high humidity. It is mildew, rust, graffiti and impact resistant. Our most popular colors are also available in 100% post-consumer recycled material.



STANDARD COLOR SELECTION:



Gray 9200



White 9201



Tan 9202



Black 9205



Burgundy 9211



Mocha 9212



Black Confetti 9217



Olive 9223



Azure 9231



Moss 9233



Cream 9235



Charcoal 9237



Folkstone Gray 9400



Ivory Essence Speckle
9500

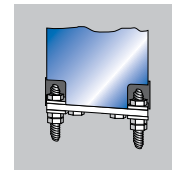


Hunter Green 9508

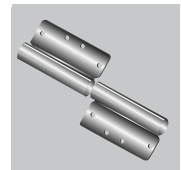


Blue 9509

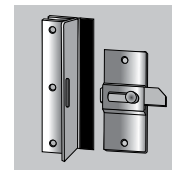
STANDARD FEATURES:



Heavy-Duty Pilaster Mounting System
Heavy-duty 5/16" diameter mounting studs adjust height and level pilasters by turning the lock nut adjusters.



8" Aluminum Wrap-Around Hinge
Industry-standard with heavy internal pins at top and bottom.



6" Aluminum Strike
Industry-standard wrap-around strike/keeper.



Pebble Grained
Textured surface for maximum resistance to vandalism and ease of cleaning.

OPTIONS:

- *Continuous Brackets*
 - Anodized Aluminum
 - Stainless Steel
 - Plastic*
- *Hinges*
 - Vault-Type
 - Continuous Piano
 - Integral
- *Ultimate Privacy™*
- *Plastic Shoes**
- *Anti-Microbial Additives*
- *Custom Colors*

*To match or complement your Accurate partitions, plastic brackets and shoes are available in the following colors: White, Cream, Tan, Black, Charcoal, Gray, Blue, Azure, Moss, and Burgundy.

Shower Dividers and Dressing Booths are strong and durable to hold up in public shower areas. Accurate offers materials that resist penetration by water, steam, mildew, odors and soap.



The clean, modern design is attractive as well.

Dressing Booths enhance shower installations—available with door or curtain options. Available in solid plastic and phenolic.

POWDER COATED

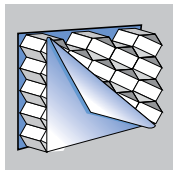
The powder coating and galvanized steel on these partitions provide quality and economy. The finish is resistant to wear, fading and scuffing. It is easily cleaned with a mild soap solution and wiped dry. The core is made of cellular honeycomb for solid construction and sound attenuation.



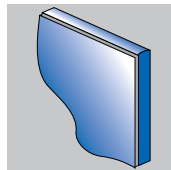
STANDARD COLOR SELECTION:

Azure 815	Sandstone 832	Sand 836	Sage 911	Adobe 917
Burgundy 919	Almond 920	Black White Speckle 921	Black 930	Gray 940
Navy 950	Pebble 959	White 980	Light Gray 990	Gray White Speckle 992

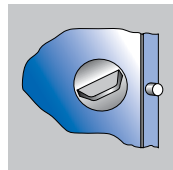
STANDARD FEATURES:



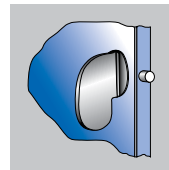
Honeycomb Core
Made of cellular honeycomb. This type of core provides strong construction and sound attenuation.



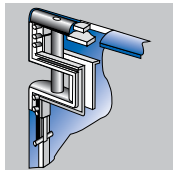
Welded Corner
Corners of panels, pilasters and doors are welded to each other and to the adjacent face sheets.



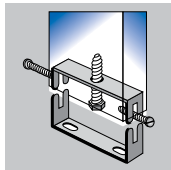
Concealed Latch Mechanism
Housed entirely inside the door for durability, tamper-resistance and a clean look.



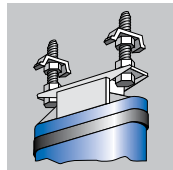
ADA Paddle Handle
The largest and easiest-to-operate door handle in the industry provides unmatched accessibility.



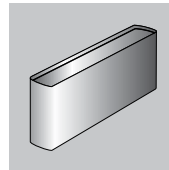
Upper Door Bracket
Internal part of the door. A pin goes through door and bracket for three-point bearing and operates in a nylon bushing in upper hinge bracket.



One Piece Mounting Bracket
For faster, more precise and sturdier installation of Overhead Braced pilasters.



Alternate Pilaster Mounting
This heavy gauge mounting is furnished on all ceiling-hung and floor-anchored pilasters.



Shoe Construction
One-piece stainless steel, type 304, with #4 satin finish trim shoes are hemmed top and bottom for rigidity and sleek appearance.

OPTIONS:

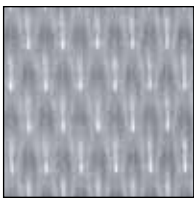
- Stainless Steel Stirrup Brackets
- Stainless Steel Door Hardware
- Continuous Brackets
 - Anodized Aluminum
 - Stainless Steel
- Continuous Piano Hinges
- Ultimate Privacy™
- Custom Colors



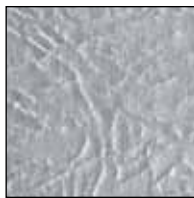
The elegance of stainless steel components complements any design scheme, either in new construction or for renovations. Stainless steel toilet partitions provide a modern look and retain their gleaming beauty indefinitely. By adding a textured finish, increased resistance to vandalism can be achieved. Available in all four mounting styles.



OPTIONAL TEXTURED FINISHES:

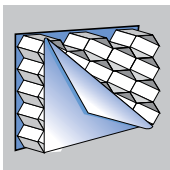


5-WL Diamond



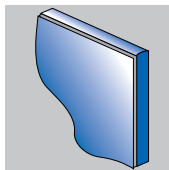
60-LTH Leather Grain

STANDARD FEATURES:



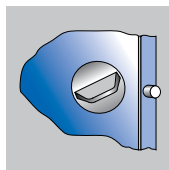
Honeycomb Core

Made of cellular honeycomb. This type of core provides strong construction and sound attenuation.



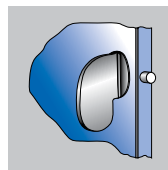
Welded Corner

Corners of panels, pilasters and doors are welded to each other and to the adjacent face sheets.



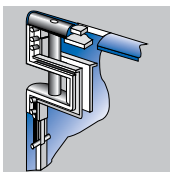
Concealed Latch Mechanism

Housed entirely inside the door for durability, tamper-resistance and a clean look.



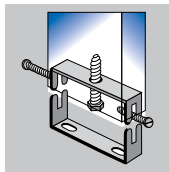
ADA Paddle Handle

The largest and easiest-to-operate door handle in the industry provides unmatched accessibility.



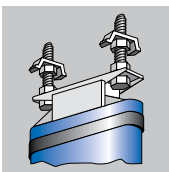
Upper Door Bracket

Internal part of the door. A pin goes through door and bracket for three-point bearing and operates in a nylon bushing in upper hinge bracket.



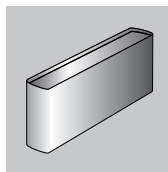
One Piece Mounting Bracket

For faster, more precise and sturdier installation of Overhead Braced pilasters.



Alternate Pilaster Mounting

This heavy gauge mounting is furnished on all ceiling-hung and floor-anchored pilasters.



Shoe Construction

One-piece stainless steel, type 304, with #4 satin finish trim shoes are hemmed top and bottom for rigidity and sleek appearance.

OPTIONS:

- Stainless Steel Stirrup Brackets
- Stainless Steel Door Hardware
- Continuous Brackets
 - Anodized Aluminum
 - Stainless Steel
- Continuous Piano Hinges
- Ultimate Privacy™
- Wood Core



PHENOLIC

Black-Core Phenolic partitions are decoratively faced on both sides of a resin-impregnated kraft paper core. The surface and core sheets are fused at high temperature and pressure. In addition to strength and serviceability, a wide range of colors provides limitless design flexibility. Phenolic Partitions are available in all four mounting styles.

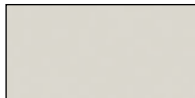
FAST TRACK: 10 Working Days

Any standard color – in all four styles.

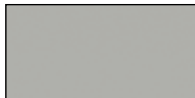
STANDARD COLOR SELECTION:



Neutral Glace 1130



Silver Gray 3000



Dove Gray 3010



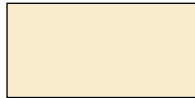
Graphite Grafix 3020



Folkstone Celesta 3300



Ebony Granite 3330



Almond 4000



Natural Canvas 4410



Burgundy 5000



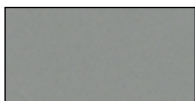
Hunter Nebula 6035

True to its name, **Color-Thru Phenolic** is made with surface color throughout the partition. With all the advantages of traditional Phenolic performance, it's especially effective when gouging and vandalism are an issue.

STANDARD COLOR SELECTION:



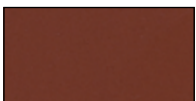
Black 2000C



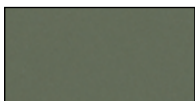
Gray Mist 3450C



Hazelnut 4450C



Cinnamon 5450C

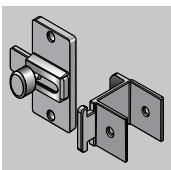


Sage 6450C

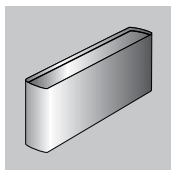


Persian Blue 7450C

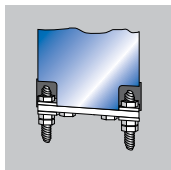
STANDARD FEATURES:



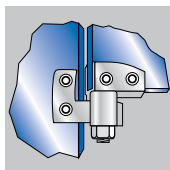
Heavy-Duty Latch With Emergency Access
Allows for emergency access with a simple lift and pull.



Shoe Construction
Stainless steel, double-hemmed, trim shoe with #4 satin finish conceals mounting fastener and hardware.



Heavy-Duty Stainless Steel Mounting System
Mounting bolts adjust height and level pilasters by turning the lock nut adjusters.



Vault-Type Hinge
Rugged, attractive wrap-around hinge. Extra strong for heavy-duty installations.

OPTIONS:

- Continuous Piano Hinges
- Continuous Brackets
 - Anodized Aluminum
 - Stainless Steel
- Custom Colors
- Class "A" Fire Rated Material – Black-Core Only



PLASTIC LAMINATE

Plastic laminate partitions' high-pressure, 0.050" vertical-grade laminate finishes, bonded under pressure to a solid impact-resistant particle board core, meet or exceed all NEMA standards. Edge banding of all components prior to face lamination ensures optimum water runoff and durability. Plastic laminate partitions are available in all four mounting styles and a variety of designer colors to complement tile, vanities and counter tops. They are the finish of choice for commercial and institutional installations where aesthetics are essential and cost is a consideration.

FAST TRACK: 10 Working Days

Any standard color – in all four styles.

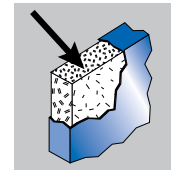


STANDARD COLOR SELECTION:

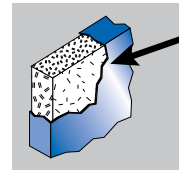


*Directional pattern — Pattern on panels over 60" wide will run perpendicular to pattern on doors and plasters.

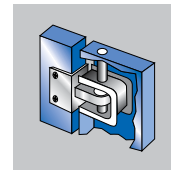
STANDARD FEATURES:



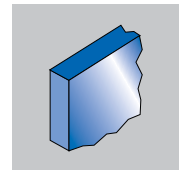
Solid Core
#45 high density particleboard to resist warping and ensure surface smoothness.



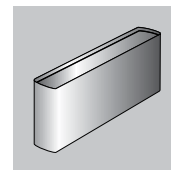
Vertical-Grade Laminate
The 0.050" thickness meets the most demanding partition specification.



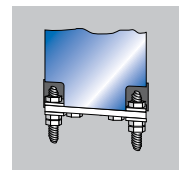
Door Hinges
Full weight-bearing hinges on both top and bottom of each door. Wrap-around mounting and through bolting for safety.



Edge Construction
Face laminate overlaps edge banding to ensure water runoff and deter vandalism.



Shoe Construction
Stainless steel, double-hemmed, trim shoe with #4 satin finish conceals mounting fastener and hardware.



Mounting System
Heavy-duty pilaster-to-floor mounting. Mounting bolts adjust height and level pilasters by turning the lock nut adjusters.

OPTIONS:

- Stainless Steel Hardware
- Continuous Brackets
 - Anodized Aluminum
 - Stainless Steel
- Continuous Piano Hinges
- Steel Core Pilasters
- Plywood Core

MATERIAL SELECTION GUIDE

	SOLID PLASTIC (HDPE)	POWDER COATED STEEL
ENVIRONMENTAL DESIGN (LEED v3.0)		
RECYCLED CONTENT		
MR 4.1 - Post Consumer; Standard (Optional*)	0% (100%)	54%
MR 4.2 - Post Industrial; Standard (Optional*)	33% (0%)	27%
LOW-EMITTING MATERIALS		
IEQ 4.1 - VOC Content of Adhesives (Below defined limits)	N/A**	Yes
IEQ 4.2 - VOC Content of Paint (Below defined limits)	N/A**	Yes
IEQ 4.4 - Free of Added Urea Formaldehyde Resins	Yes	Yes
REGIONAL MATERIALS		
MR 5.1 - Final Assembly Point	Toccoa, GA 30577	McCook, IL 60525
APPLICATION		
Fire Rating; Standard (Optional*)	B	A
Vandal Resistance	High	Average
Ease of Maintenance	High	Average
Wet Area Suitability	High	Low
RELATIVE COST (Powder Coated Steel = 100%)	190%	100%
WARRANTY	15 Years	3 Years
COLOR / FINISH OPTIONS	16 Standard Colors	15 Standard Colors
MOUNTING STYLES ♦ = Available		
Floor Anchored/Overhead Braced	♦	♦
Floor Mounted		♦
Ceiling Hung - Maximum Height	96" (Requires X Bracing)	108"
Floor-to-Ceiling - Maximum Height	120"	120"
Ultimate Privacy	♦	♦
HARDWARE ● = Standard ○ = Optional		
STIRRUP BRACKETS		
Chrome Plated Zamac		●
Stainless Steel		○
Aluminum	●	
CONTINUOUS BRACKETS		
Stainless Steel	○	○
Aluminum	○	○
Plastic	○	
HINGES		
Zamac Wrap-Around		●
Stainless Steel Wrap-Around	○	○
Continuous Stainless Steel	○	○
8" Aluminum Wrap-Around	●	
Integral	○	
LATCHES		
Zamac Concealed		●
Stainless Steel Concealed		○
Zamac Surface Mount Slide		○
Stainless Steel Surface Mount Slide	○	○
HD Slide w/6" AL Wrap-Around Strike	●	
TRIM SHOES		
Stainless Steel	●	●
Plastic	○	

* Available at Additional Cost

N/A** - Not Applicable

ACCURATE PARTITIONS

SPECIFICATIONS:

Complete specifications or additional information, can be found on our website: accuratepartitions.com.

COLOR DISCLAIMER:

The color charts shown in this catalog are printed reproductions and are for descriptive purposes only. Color selection cards are available upon request. Accurate Partitions Corp. reserves the right to change specifications and products without notice.



ADA CODE REQUIREMENTS:

Accurate Partitions has been a pioneer in the design of facilities for the physically challenged. Our engineers stand ready to assist in layout design to meet code or special requirements.

WARRANTY:

Individual warranty descriptions for each of the partition materials that Accurate sells are available for download at accuratepartitions.com.

THE ASI GROUP

Accurate Partitions is a part of The ASI Group. The ASI Group is your single source solution for Washroom Accessories, Toilet Partitions, Lockers and other storage products worldwide.

Our mission is to make our customers successful by providing value that exceeds price and an excellent service experience. We do this by providing superior design, the broadest range of quality products in the industry, and state-of-the-art manufacturing to ensure that we have whatever our customers need, whenever they need it.

With experienced architectural representatives and customer service teams, we are here to help you deliver on projects that range from world-class office buildings, educational facilities, sports venues, and government buildings to hospitals, chain stores, and hospitality / entertainment complexes.

Visit Accurate Partitions' affiliated companies, American Specialties, Inc. and ASI Storage Solutions Inc., for all your washroom and storage needs.



americanspecialties.com



asilockers.com



ASI Group is committed to doing our part in saving our planet –
The Footprint We Make Matters!

Accurate™

Accurate Partitions Corp.

P.O. Box 287, Lyons, IL 60534

Tel: 708.442.6800 Fax: 708.442.7439

E-mail: info@accuratepartitions.com Web: accuratepartitions.com

Distributed by: