

DORMA

Architectural Hardware





DORMA By Choice™



DORMA Architectural Hardware

is part of DORMA Americas—a leading global manufacturer of premium access solutions that enable better buildings. The full range of DORMA products and services provides safety and security as well as convenience and comfort. DORMA features a design-oriented portfolio of architectural door hardware, specialty hardware for glass door and wall applications, door automation systems including Crane Revolving Doors, and operable wall systems featuring Modernfold. DORMA Americas is part of DORMA Group Worldwide, a market leader of innovative and inspiring designs and technologies for access solutions.

Security, Safety, Convenience.

Within the commercial openings industry, DORMA has earned a widespread reputation for products that ensure secure, safe, and convenient doorways. DORMA Architectural Hardware manufactures and markets a complete line of door controls, locks, exit devices, and access control hardware.

Meeting Future Challenges Today.

By employing the latest technological processes, DORMA meets the challenges of the future today—we guarantee absolute tolerance accuracy, advanced design, and the use of the newest materials. We are continually expanding our line of quality products and comprehensive array of value-added services.

ISO 9001 Certified.

The quality management systems at the Reamstown, PA and Steeleville, IL facilities are certified to ISO9001:2008.*



*DORMA Door Controls Inc., dba: DORMA Architectural Hardware



Pages 4–7

Locks & Key Systems



Pages 8–9

Exit Devices



Pages 10–11

Surface Door Closers



Pages 12–13

Concealed Door Closers and Pivots



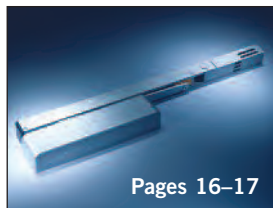
Pages 14–15

Sliding Door Hardware



Page 15

Low Energy Operators



Pages 16–17

Holder/Release Devices and Stops/Holders



Page 18

Coordinator Systems



Pages 18–19

Access Control



Locks and Key Systems

DORMA's line of mortise, cylindrical, tubular, and dead bolt locks offers a comprehensive selection of Grade 1 and Grade 2 locks that meet the functional and aesthetic requirements of commercial and institutional doors. Models throughout the line have UL listings and meet or exceed ANSI standards. In addition, DORMA offers a complete selection of cylinders and keying options, including master keying, construction master keying, and patented key control.

Grade 1 Heavy Duty Locksets

M9000 Mortise Locksets

These premium performance locksets are built with a heavy-duty mortise chassis for all applications where ANSI/BHMA A156.13 Grade 1 products are required. To meet the aesthetic needs of your project, these versatile locks are available in a range of lever and knob trim designs.



Recommended Applications:

- Education • Dormitories
- Health Care • Public
- Religious • Amusement
- Retail • Warehouses
- Offices • Hotels

Configuration Options:

- Lever or knob
- Forty-one functions
- Five cylinder options
- Nine finishes
- Two rose designs
- Two escutcheon designs

C800 Cylindrical Locksets

These premium locks are built with a high performance cylindrical chassis for all applications where ANSI/BHMA A156.2 Series 4000 Grade 1 products are required. To meet the aesthetic needs of your project, these versatile locks are available in a range of lever and knob trim designs.



Recommended Applications:

- Education • Dormitories
- Health Care • Public
- Religious • Amusement
- Retail • Warehouses
- Offices • Hotels

Configuration Options:

- Lever or knob
- Twenty-four functions
- Twelve cylinder options
- Eight finishes
- Three rose designs

Dead Bolts

DORMA offers a choice of rugged dead bolts to provide an added sense of protection. Both the Heavy-Duty D800 and the reliable Grade 2 DB600 offer higher levels of security when combined with DORMA 800, 700, 600, or 500 Series locksets.



Grade 1 D800 Dead Bolts

Recommended Applications:

- Education • Dormitories
- Health Care • Public
- Religious • Amusement
- Transportation • Retail
- Warehouses • Offices • Hotels
- Automotive • Manufacturing



Configuration Options:

- Eight functions
- Four cylinder options
- Six finishes

Grade 2 DB600 Dead Bolts

Recommended Applications:

- Education • Dormitories
- Health Care • Public
- Religious • Amusement
- Transportation • Retail
- Warehouses • Offices • Hotels
- Automotive • Manufacturing



Configuration Options:

- Two functions
- Four cylinder options
- Six finishes

Grade 2 Locksets

CL700/CK700 Series Cylindrical Locksets

These key-in-lever locksets are built with a high performance cylindrical chassis for all applications requiring ANSI/BHMA A156.2 Grade 2 products. To meet your project's aesthetic needs, these versatile locks are available in a range of lever and knob trim designs.



Recommended Applications:

- Health Care
- Amusement
- Warehouses
- Hotels
- Religious
- Retail
- Offices

Configuration Options:

- Lever or knob
- Ten functions
- Five cylinder options
- Seven finishes
- Two rose designs

C500 Series Cylindrical Locksets

These key-in-lever locksets are built with a high performance cylindrical chassis for all applications where ANSI/BHMA A156.2 Grade 2 products are required. The C500 offers ten different functions to help solve your challenging applications.



Recommended Applications:

- Hotels
- Religious
- Municipal Buildings
- Retail Complexes
- Warehouses
- Apartments
- Offices

Configuration Options:

- Two lever designs
- Ten functions
- Four standard finishes
- Two optional finishes

J200 Series Interconnected Locksets

These interconnected locksets are built with a cylindrical chassis and tubular dead bolt for all applications requiring ANSI/BHMA A156.12 Grade 2 products. A range of trim designs is available to meet your project's aesthetic needs.



Recommended Applications:

- Apartments
- Assisted Living
- Other Multifamily Housing
- Condominiums

Configuration Options:

- Five lever designs
- Three functions
- Five cylinder options
- Four finishes

C400 Series Tubular Locksets

These locksets are built with a tubular chassis for all applications requiring ANSI/BHMA A156.2 Grade 2 products. To meet the aesthetic needs of your project, these versatile locks are available in a range of trim designs.



Recommended Applications:

- Apartments
- Condominiums
- Other Multifamily Housing
- Assisted Living

Configuration Options:

- Five lever designs
- Three functions
- Four finishes



NOTE: The numbers shown in the table columns below indicate how many options are available for the corresponding cylinder or core property.

Mortise Cylinders						
MORTISE CYLINDERS	KEYWAY	CYL RING	CAM	LENGTH	KEYING	FINISH
Conventional (non-IC)	Schlage C, E Arrow A DORMA D100 (SKC) Corbin 60, 67, 77, 59A1 CorbinRusswin L4 Russwin 981, D1 Sargent LA Schlage F Weiser E Yale 8, GA	7	11	6	MKD KA KD 0-Bit	7
Interchangeable Core	Best A, B, C, D, E, F, G, H, J, K, L, M, Q DORMA D100 (SKC)	9	11	2	Temp Construction Core or Combined	7
Dummy	—	7	—	2	—	6
Thumbturn	—	7	11	2	—	6

Rim Cylinders					
RIM CYLINDER	KEYWAY	CYL RING	TAIL PIECE	KEYING	FINISH
Conventional (non-IC)	Schlage C, E Arrow A DORMA D100 (SKC) Corbin 60, 67, 77, 59A1 CorbinRusswin L4 Russwin 981, D1 Sargent LA Schlage F Weiser E Yale 8, GA	1	4	MKD KA KD 0-Bit	6
Interchangeable Core	Best A, B, C, D, E, F, G, H, J, K, L, M, Q DORMA D100 (SKC)	1	4	Temp Construction Core or Combined	6



Key-in-Knob/Lever Cylinders					
KEY-IN-KNOB CYLINDER	KEYWAY	TAIL PIECE	KEYING	FINISH	OTHER
Conventional (non-IC)	Schlage C, E DORMA D100 (SKC) Arrow A Corbin 60, 67, 77, 59A1 CorbinRusswin L4 Russwin 981, D1 Sargent LA Schlage F Weiser E Yale 8, GA	12	MKD KA KD 0-Bit	2	Knob or lever design

Hotel Cylinders				
HOTEL CYLINDER	KEYWAY	CYL RING	KEYING	FINISH
Cylindrical Hotel	Schlage C, E	—	MKD 0-Bit	2
Mortise Hotel 95	Schlage C, E DORMA D100 (SKC)	2	MKD 0-Bit	7

Interchangeable (IC) Cores			
IC CORE	KEYWAY	KEYING	FINISH
Standard	Best A, B, C, D, E, F, G, H, J, K, L, M, Q DORMA D100 (SKC)	Combined or uncombined	2

DORMA SKC— Serialized Key Control

Before Serialized Key Control (SKC), key system tracking and maintenance was complicated. Facilities designed complex mechanisms and maintained the security of the key system with key cards and special forms.

DORMA developed the SKC program with two things in mind—simplicity and security. DORMA maintains key control by serializing every key blank. Authorized resellers and key cutters use a secure, web-based application to verify and track every single key.



DORMA D100 keyway signifies SKC Serialized Key Control. DORMA SKC maintains key control by serializing every key blank.

DORMA SKC allows the use of conventional and small format interchangeable core cylinders in the same key system. This makes it possible to use interchangeable cores where they are most needed and conventional cylinders where they are not. Facilities with a mix of Best™ style interchangeable cores and conventional architectural hardware can use a single key system without replacing any locks. With SKC, you don't have to choose between SFIC and conventional cylinders to regain perimeter key control.



Exit Devices

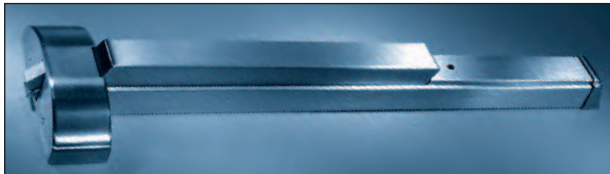
DORMA's line of exit devices reliably secures egress doors in compliance with all applicable fire/life safety code requirements. Wide and narrow stile exit devices for high-impact applications are available in rim, mortise, and surface or concealed rod configurations in both fire- and panic-rated versions. A delayed egress exit device is available when security and safety are a concern. They offer the specifier a selection of true architectural finishes and a full complement of electrified options, including alarmed exit, delayed egress exit, electric latch retraction, and device monitoring.

All DORMA exit devices are listed by U.L. and C.U.L. under their continuing reinspection programs and conform to standards U.L. 10C positive pressure testing. They are BHMA certified to the requirements of ANSI A156.3 for Grade 1 exit devices.

9000 Series (Wide Stile)

DORMA 9000 Series heavy-duty exit devices provide superior durability for high impact applications such as schools, universities, and other institutional or commercial buildings.

The heavy-duty cast chassis provides superior durability, while the smooth reduced projection touchbar assembly minimizes catch hazards. The partial length touchpad permits field installation of options such as cylinder dogging and exit alarm. A full complement of free wheeling lever trim is available in a wide range of architectural finishes.



Recommended Applications:

- Education • Dormitories • Health Care • Public
- Religious • Amusement • Transportation • Retail
- Warehouses • Offices • Hotels • Automotive
- Manufacturing

Configuration Options:

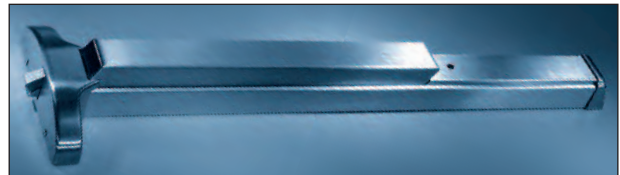
- Four models: 9100 concealed vertical rod, 9300 rim, 9400 surface vertical rod, and 9500 mortise
- Three lengths
- Four types of monitor
- Three types of alarm
- Four types of control
- Hundreds of trim and lever styles and finish combinations
- Strike options depending on model
- Antimicrobial protected coating

9000 Series (Narrow Stile)

DORMA 9000 Series narrow stile exit devices with a shortened touchbar are the ultimate solution when narrow stile doors require an exit device.

The heavy-duty cast chassis design permits installation on narrow stile doors where a standard device may not fit. The smooth projection touchbar assembly minimizes catch hazards. The partial length touchpad permits field installation of options such as cylinder dogging and exit alarm.

The DORMA 9000 Series narrow stile exit devices are available in a wide range of models and offer a full complement of free wheeling lever trim to meet most narrow stile door applications.

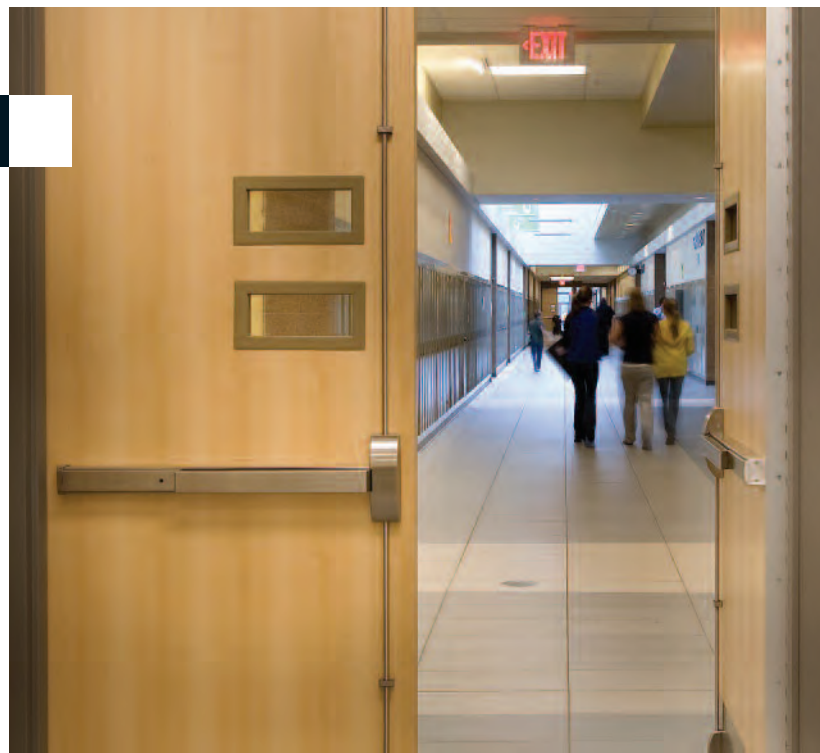


Recommended Applications:

- Education • Dormitories • Health Care • Public
- Religious • Amusement • Transportation • Retail
- Warehouses • Offices • Hotels • Automotive
- Manufacturing

Configuration Options:

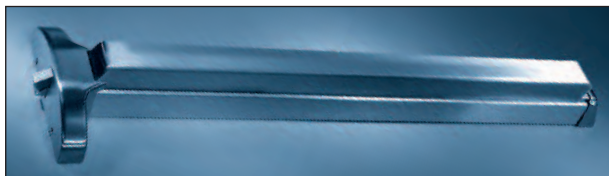
- Three models: 9600 concealed vertical rod, 9700 rim, and 9800 surface vertical rod
- Three lengths
- Four types of monitor
- Three types of alarm
- Four types of control
- Hundreds of trim and lever styles and finish combinations
- Strike options depending on model
- Antimicrobial protected coating





9000 Series (Narrow Stile/Full Length Touchbar)

NOTE: The 9000 Series narrow stile with full length touchbar exit device is suitable for applications designed to meet the ANSI A156.3, EN1125, and Certifire standards.



The DORMA 9000 Series narrow stile exit device with full length touchbar is a vertical panic device for egress control installation on tempered glass doors in which security, reliability, and appearance are considerations. This narrow stile architectural device with full-length touchbar provides a less conspicuous alternative for tempered glass doors.

Recommended Applications:

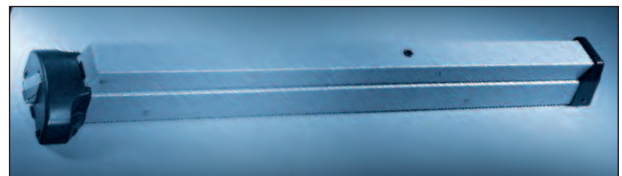
- Education • Dormitories • Health Care • Public
- Religious • Amusement • Transportation • Retail
- Warehouses • Offices • Hotels • Automotive
- Manufacturing

Configuration Options:

- Three models: 9600 FL concealed vertical rod, 9700 FL rim, and 9800 FL surface vertical rod
- Six lengths
- Three types of monitor
- Electric latch retraction
- Three types of alarm
- Fourteen standard finishes
- Strike options depending on model
- European cylinder housing available on some trim functions
- Antimicrobial protected coating

8000 Series (Economical)

DORMA 8000 Series exit devices with deadlocking latch bolts minimize forced entry while offering a low-cost solution to life/safety requirements.



The touchbar, rail assembly, and integral parts are constructed of solid steel with covers and end caps developed from high-impact ABS thermoplastic. The devices are offered in an array of durable powder coated finishes and stainless steel.

Recommended Applications:

- Education • Dormitories • Health Care • Public
- Religious • Amusement • Transportation • Retail
- Warehouses • Offices • Hotels • Automotive
- Manufacturing

Configuration Options:

- Two models: 8300 rim and 8400 surface vertical rod
- Three lengths
- Three types of monitor
- Three types of alarm
- Six standard finishes
- Sixteen trim styles
- Strike options depending on model
- Electric latch retraction
- Antimicrobial protected coating

Surface Door Closers

DORMA's surface closers range from advanced technology designs to traditional architectural and commercial products—all Grade 1 surface closers are backed by an unprecedented 25-year warranty.

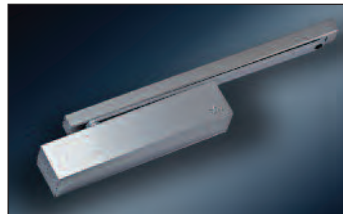
All DORMA surface closers are manufactured to meet the requirements of ANSI A156.4. DORMA surface closers offer an assortment of specialty function arms, mounting plates and brackets, and a wide range of painted or electroplated architectural finishes to suit almost any application.



TS93 Series

The TS93 Series represents the pinnacle of surface applied closers because of its unique cam and roller design.

Doors equipped with the TS93 will open much more easily than doors with rack and pinion closers. The TS93 is a closer with regular arm operating efficiency and track arm aesthetics.



Recommended Applications:

- Education • Dormitories • Health Care • Public • Offices
- Religious • Amusement • Transportation • Retail
- Warehouses • Hotels • Automotive • Manufacturing

Configuration Options:

- Full range of spring adjustability
- Several arm configuration choices
- Fasteners to cover many door and frame conditions
- Optional painted or plated finishes

8900 Series

DORMA 8900 Series heavy-duty door closers have been independently certified to 10 million cycles.

These feature-rich closers provide full-range spring power adjustment, independent latch and sweep speed valves, backcheck (BC) and backcheck positioning (P) valves, along with a narrow projection full cover, flat form style arm, full-size template, and separate wood and metal screws—all standard. The 8900 Series delivers the perfect combination of durability, reliability, and appearance.



Recommended Applications:

- Education • Dormitories • Health Care • Public • Offices
- Religious • Amusement • Transportation • Retail
- Warehouses • Hotels • Automotive • Manufacturing

Configuration Options:

- Full range of spring adjustability
- Many arm configuration choices
- Optional covers
- Delay option
- Fasteners to cover many door and frame conditions
- Optional mounting plates and brackets
- Optional painted or plated finishes

8600 Series

DORMA 8600 Series closers represent the latest in door control technology, designed to exceed the demands of today's buildings. With features like full range spring power adjustment and backcheck positioning valve, the 8600 Series closer provides the flexibility needed to meet the many demands of commercial and institutional applications, including ADA barrier-free accessibility requirements.



Recommended Applications:

- Education • Dormitories • Health Care • Public • Offices
- Religious • Amusement • Transportation • Retail
- Warehouses • Hotels • Automotive • Manufacturing

Configuration Options:

- Full range of spring adjustability
- Many arm configuration choices
- Optional covers
- Delay option
- Fasteners to cover many door and frame conditions
- Optional mounting plates and brackets
- Optional painted or plated finishes

STA Series

The DORMA STA Series surface closers combine the versatility and flexibility of the 8900, 8600, and 7400 Series with maximum corrosion-resistance. Ideal for use in severe climate conditions, such as seashore and swimming pool areas, offshore oil rigs, ships, chemical plants, sewage treatment facilities, or anywhere rust and corrosion present a problem.



Recommended Applications:

- Education • Dormitories • Health Care • Public • Offices
- Religious • Amusement • Transportation • Retail
- Warehouses • Hotels • Automotive • Manufacturing

Configuration Options:

- 8900, 8600, and 7400 Series models
- Full range of spring sizes
- Delay option
- Optional tripack
- Optional fastener packs
- Optional covers
- Optional mounting plates and brackets
- Optional painted finishes or 630 satin stainless finish

7400 Series

DORMA 7400 Series closers offer modern styling and versatility while providing safe and reliable door control.

Featuring backcheck and adjustable spring sizes, DORMA's 7400 Series is the ideal solution in a wide variety of applications, including barrier-free. This Grade 1 hydraulic surface door closer is both flexible and easy to install.



Recommended Applications:

- Education • Dormitories
- Health Care • Public • Offices • Religious • Amusement
- Transportation • Retail • Warehouses • Automotive
- Hotels • Manufacturing

Configuration Options:

- Full range of spring adjustability
- Many arm configuration choices
- Optional covers
- Delay option
- Optional fastener packs
- Optional mounting plates and brackets
- Optional painted finishes

7300 Series

DORMA 7300 Series closers offer modern styling for a new era of safe and reliable door control. The 7300 Series compact design is available in an assortment of sprayed finishes to complement any opening's decor. These features, along with numerous installation options and fixed spring sizes, make this Grade 1 closer an ideal solution in a variety of applications.



Recommended Applications:

- Education • Dormitories • Health Care • Public • Offices
- Religious • Amusement • Transportation • Retail
- Warehouses • Hotels • Automotive • Manufacturing

Configuration Options:

- Fixed spring sizes in 2, 3, 4, and 5
- Optional slim cover
- Many arm configuration choices
- Optional fastener packs
- Optional mounting plates and brackets
- Optional painted finishes



Concealed Door Closers

Architects are often challenged to design buildings that are both beautiful and functional, down to the last detail. DORMA offers the perfect solution for those who prefer the aesthetic advantages of a concealed door closer.

DORMA's full range of products includes floor concealed, overhead concealed, and concealed in the door closers. All products comply with barrier-free requirements and can be used with aluminum, wood, or hollow metal doors and frames.

BTS80 Series

The BTS80 Series Closer's wide selection of interchangeable spindles makes it suitable for virtually any floor or threshold application.

Because the BTS80 can control exceptionally heavy single- and double-acting doors, it can be incorporated into almost any design to meet most materials, size, and weight requirements.



Recommended Applications:

- Education • Dormitories • Health Care • Public • Retail
- Religious • Amusement • Transportation • Warehouses
- Offices • Hotels • Automotive • Manufacturing

Configuration Options:

- Wide range of packages
- Spring sizes to cover a range of door sizes
- Optional spindles for various door clearances
- Optional wood screws
- Variety of plated and painted finishes
- Optional hold open or delay feature
- Variety of optional accessories

BTS80 EMB Series

The BTS80 EMB Series of floor-concealed door closer provides an electromagnetic hydraulic hold open feature that allows doors to self-close upon the interruption of electrical current, yet remain functional in non-critical situations.



Recommended Applications:

- Education • Dormitories • Health Care • Public • Retail
- Religious • Amusement • Transportation • Warehouses
- Offices • Hotels • Automotive • Manufacturing

Configuration Options:

- Wide range of packages
- Optional spindles for various door clearances
- Optional wood screws
- Variety of plated and painted finishes
- Variety of optional accessories

BTS75V Series

The BTS75V Series Closer's compact body permits its use where a larger closer would be prohibitive. Versatility allows installation in thin slab concrete subfloor construction.



A wide selection of interchangeable spindles makes the BTS75V suitable for virtually any floor covering or threshold application. Adjustable spring power from size 1-4 allows the necessary adjustment required for both barrier-free and non barrier-free openings, giving ultimate installation flexibility.

Recommended Applications:

- Education • Dormitories • Health Care • Public • Retail
- Religious • Amusement • Transportation • Warehouses
- Offices • Hotels • Automotive • Manufacturing

Configuration Options:

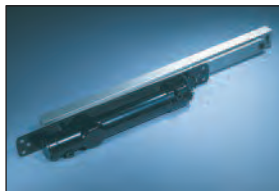
- Wide range of packages
- Adjustable spring to cover a range of door sizes
- Optional spindles for various door clearances
- Variety of plated and painted finishes
- Optional hold open or delay feature
- Optional wood screws



ITS96 Series

DORMA's ITS96 offers the optimum solution for applications requiring concealed door controls.

The unique cam and roller technology meets the challenge of providing the operation and features necessary in a compact design. The ITS96 is suited for virtually any door and frame combination with a minimum 1-3/4" door leaf thickness.



Recommended Applications:

- Education • Dormitories • Health Care • Public
- Religious • Amusement • Transportation • Retail
- Warehouses • Offices • Hotels • Automotive
- Manufacturing

Configuration Options:

- Concealed-in-the-door or concealed-in-the-frame installations
- Spring sizes to cover a range of door sizes
- Variety of painted or plated finishes available
- Hold open option
- Optional mounting kits

RTS88 Series

The RTS88 is designed to give lasting, dependable service where surface applied units and other types of closers are not suitable or would interfere with the architectural design. It can be easily installed in wood, aluminum, or hollow metal doors and frames, for single and double-acting doors. Contractors appreciate the RTS88 closer because the majority of door and frame preparation is done prior to installation of the unit, resulting in less on-site machining.*



Recommended Applications:

- Health Care • Public • Religious • Amusement
- Transportation • Retail • Offices • Hotels
- Automotive

Configuration Options:

- Wide range of packages
- 90° or 105° models available
- Hold open option
- Spring sizes to cover a range of door sizes
- Optional wood screws
- Variety of painted or plated finishes available
- Variety of optional accessories
- Always use an auxiliary stop in all RTS88 installations

*Always use an auxiliary stop with the RTS88 closer.

Pivots

Whatever your pivot requirements, turn to DORMA and put the weight of your door on our pivots. DORMA's commitment to quality is your assurance of durability and long life. DORMA pivots support door weight effectively in a variety of applications. Like all DORMA products, our pivots are available in an array of finishes to enhance and complement surrounding decor.

LM Series Pivots

DORMA's LM Series pivots using brass and steel are designed for long life and trouble-free operation. Each pivot and pivot set meets DORMA's exacting specifications for support of rated and non-rated high-traffic interior and exterior openings, extra-heavy doors, or lead-lined doors. Pivots for 20 minute and 3 hour fire-rated doors comply with applicable codes.



DORMA pivots span a wide variety of styles and applications that can interface with other DORMA products on wood, aluminum, or hollow metal doors and frames. They can also be used on doors of special design such as paneled doors, and doors of unusual weight, thickness, or material.

Recommended Applications:

- Education • Dormitories • Health Care • Public
- Religious • Amusement • Transportation • Retail
- Warehouses • Offices • Hotels • Automotive
- Manufacturing

Configuration Options:

- Wide range of packages
- Heavy-duty or extra heavy-duty models
- Center hung, offset, or pocket pivots
- Optional wood screws
- Intermediate pivots available
- Variety of painted or plated finishes available
- Optional spindles for various door clearances



Sliding Door Hardware

DORMA Architectural Hardware offers a variety of sliding door hardware for expanding your design options. With DORMA CS10 MANET, CS60 AGILE, CS70 DORMOTION, or CS80 MAGNEO, you can create efficient and elegant openings for office or residential applications with systems that accommodate wood, hollow metal, glass panel, and narrow stile doors. Sliding doors save over 85% of floor space compared to swinging doors.



CS10 MANET

Uninterrupted style.

MANET doors discreetly enhance the ambience of any room. High quality stainless steel fittings create sliding doors with minimal hardware—the glass doors virtually appear to float. Smooth-running rollers glide on the track, ensuring efficient, quiet operation every time. MANET systems accommodate single, bi-parting, and curved applications. MANET COMPACT sets are readily available and include all hardware required for the door



CS60 AGILE

Sleek design, unmatched durability.

The DORMA CS60 AGILE system combines versatility and durability to create a sophisticated and minimalist opening. The hidden rollers operate on a compact track that can be mounted on a wall or ceiling, or recessed into the ceiling for an all-glass look. The system also provides superior versatility in installation and maintenance with no glass fabrication. The Syncro version allows two panels to open and close simultaneously.



CS70 DORMOTION

Assisted closing, comfortable cushioning.

CS70 DORMOTION systems offer the added convenience of cushioned travel. DORMOTION springs gently assist and smoothly draw the sliding panel to its end position as it travels on the roller assembly. Once the door has been opened or closed, an end stop holds the panel in place—eliminating both uncontrolled fallback and incomplete closure.



CS80 MAGNEO

Magnetic drive sliding entrance system.

Powered by linear magnetic drive technology (LMD), the DORMA CS80 MAGNEO is an entrance system designed for any modern interior, whether public, commercial, or private. The versatile MAGNEO meets all safety requirements for low energy applications and its extra sensitive operation instantly detects any obstruction.

Ideal for both new and retrofit interior applications, the MAGNEO's modern design and easy operation make it an attractive and efficient way to update both the function and appearance of existing interior doorways. Its sleek, clean lines blend seamlessly into any application to meet discriminating needs.

Innovative magnetic technology ensures that the MAGNEO is safe, reliable, whisper quiet, and resistant to wear. Activation is achieved via touchless design push plate, radio remote control, or motion detectors.

Low Energy Operators

The DORMA model ED800 low-energy power operator incorporates sophisticated microprocessor technology with our field-proven door closers to provide accessibility for the physically challenged. Among the most advanced door controls ever developed, this remarkable product combines, in one universal design, complete flexibility and computer-enhanced sensitivity to user needs.

ED800 Series



The ANSI A156.19 certified DORMA ED800 is a surface closer based low energy power operator that precisely senses the door environment and responds appropriately. The ED800 is designed for manual openings that

occasionally require automatic opening. It fulfills the need for constant reliable closing control of doors while providing the power to open them as needed for the physically challenged.



Accessories:

The ED800 can be activated by a variety of hard wired or radio frequency switches and transmitters. Electronic components are also available for designing integrated systems.

Recommended Applications:

- Education • Dormitories
- Health Care • Public
- Religious • Amusement
- Transportation • Retail
- Offices • Hotels

Configuration Options:

- Push or pull side mount
- Remote switch wiring
- Optional templating available for special top jamb conditions
- Deep reveal arm options
- Power cord optional
- Look-alike companion closer
- Header cover

Holder/Release Devices

The DORMA line of holder/release devices has been developed to inexpensively guard a single door opening, which would normally require an array of expensive products to serve the same function. In addition, it allows unimpeded, easy access throughout a building while not affecting its integrity to contain and cut the spread of smoke and/or fire.

The EMR Series and 1800 SD models have integral photo-electric smoke detectors which can be wired into an existing fire/smoke control system, or stand alone, independent of other systems. The 1800 non-detected models and EMF Series can function as companion units to the detected 1800 SD and EMR devices, or they can be wired directly into a central alarm system.



1800 Series

The DORMA 1800 Series hold open (H) device is designed for buildings needing smoke/fire doors in the open position under normal circumstances, but which must close

upon loss of power. These units will operate as a standard door control, whether or not power is applied.

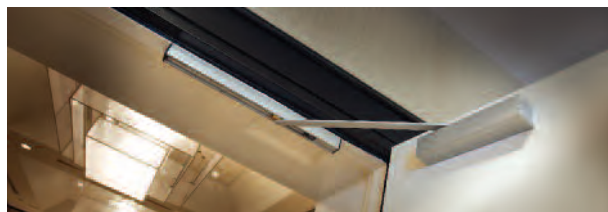
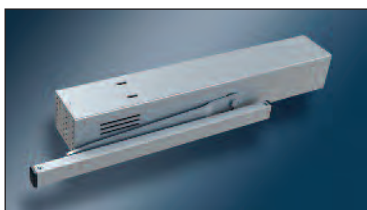
The DORMA 1800 Series free swing (FS) device is designed for buildings needing fire/smoke doors operating as if there were no closing device fitted under normal circumstances, but must be self-closing under alarm or loss of power.

Recommended Applications:

- Education • Dormitories • Health Care • Public • Retail
- Religious • Amusement • Transportation • Warehouses
- Offices • Hotels • Automotive • Manufacturing

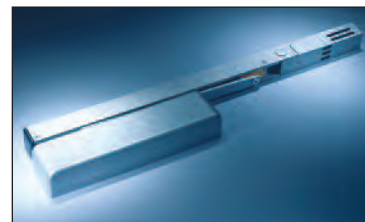
Configuration Options:

- Full range of spring sizes
- Push or pull side mounts
- Several optional painted finishes
- Integral photo-electric smoke detector
- 120 VAC, 24 VAC, and 24 VDC options
- Optional wiring configurations



EMR Series

The EMR Series hold open device includes three models for price and door closer feature/function considerations. The TS93 closer with the extra efficient cam and



roller technology can be used on larger doors, while the 8900 rack and pinion closer offers a narrow projection for less cost. When value engineering is a concern, the 8600 meets the need.

Recommended Applications:

- Education • Dormitories • Health Care • Public • Retail
- Religious • Amusement • Transportation • Warehouses
- Offices • Hotels • Automotive • Manufacturing

Configuration Options

- Push or pull side mounts
- Full range of spring sizes
- Several optional painted finishes
- Integral photo-electric smoke detector
- Optional covers
- 120 VAC, 24 VAC, and 24 VDC options
- Optional wiring configurations
- Doors can be opened beyond hold open angle, a feature unique to this device

EMF Series

Like the EMR, the non-detected EMF Series hold open device is designed to contain and cut the spread of fire and smoke when wired to a central alarm system. Three models

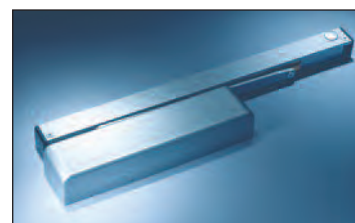
are available for price and door closer feature/function considerations. When using an EMF and EMR combination on a pair of doors, models with matching closers can be used. Both EMR and EMF models offer the same features and functions for TS93, 8900, and 8600 Series closers.

Recommended Applications:

- Education • Dormitories • Health Care • Public • Retail
- Religious • Amusement • Transportation • Warehouses
- Offices • Hotels • Automotive • Manufacturing

Configuration Options:

- Push or pull side mounts
- Full range of spring sizes
- Several optional painted finishes
- Optional covers
- 120 VAC, 24 VAC, and 24 VDC options
- Optional wiring configurations
- Doors can be opened beyond hold open angle, a feature unique to this device





EM Series



DORMA EM Series electromagnetic door holders with dual voltage capability and an adjustable catch plate provide versatility for varying applications. Add-on catch plate extensions further enhance flexibility.

The DORMA EM Series door holders are composed of a door-mounted catch plate and a floor-

or wall-mounted electromagnet. This series serves as an economical package for use in conjunction with DORMA door closers whenever controlled release and closing of doors is necessary for safety or convenience such as in hotels, hospitals, and nursing homes.

The EM Series magnets offer superior reliability with built-in protection and low residual magnetism so they release easily even in applications meeting ADA requirements with minimal spring force door closers.

Recommended Applications:

- Education • Dormitories • Health Care • Public
- Religious • Amusement • Transportation • Retail
- Warehouses • Offices • Hotels • Automotive
- Manufacturing

Configuration Options:

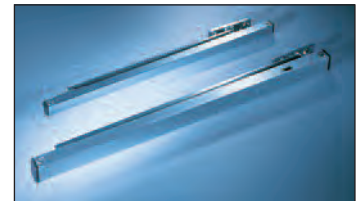
- Six mount types
- Accessories available to adjust for site conditions
- Three finishes available

Stops and Holders

DORMA offers a line of versatile stops and holders. This line complements our existing full range of door closers, providing a total door control system. Separate stops and holders are the preferred method of limiting door swing. They are ideal where the use of wall or floor stops is precluded. These high quality units are both durable and visually pleasing.

900/700 Series

A standard two-coat paint finish is the best choice to match sprayed DORMA door closers. Optional plated finishes are also available.



Recommended

Applications:

- Education • Dormitories • Health Care • Public
- Religious • Amusement • Transportation • Retail
- Warehouses • Offices • Hotels • Automotive
- Manufacturing

Configuration Options:

- Heavy-duty (900) or standard (700) model
- Wide range of door size configurations
- Stop, stop and hold, or friction hold options
- Concealed or surface application
- Pull side mounting bracket option
- Optional painted or plated finishes



Coordinator Systems

DORMA's TS93 GSR closer complements the overall design and aesthetics of a project with a full range of architectural finishes. The closer provides a wide range of application solutions through integrated arm and performance options. This Grade 1 closer provides exceptional service life through the use of heavy-duty, precision manufactured materials. The GSR Series combines exceptionally smooth, efficient door control with proper sequential closing for pairs of doors equipped with astragals or exit devices.

GSR Series



Twin TS93 closers feature DORMA's unique cam and roller mechanism that makes door opening both smoother and easier than is possible with traditional rack and pinion closers. A highly efficient GSR coordinator housed in the track unit provides dependable sequential closing of doors. TS93 GSR closers comply with barrier-free requirements.

The GSR mechanism coordinates sequential closing of doors, holds active door open until inactive door triggers release, and operates only when inactive door is opened.

Recommended Applications:

- Education • Dormitories • Health Care • Public • Retail
- Religious • Amusement • Transportation • Warehouses
- Offices • Hotels • Automotive • Manufacturing

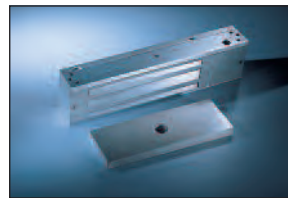
Configuration Options:

- Available with or without electric hold open options
- Full range of spring sizes
- Carry bars available
- Electric hold open available in active leaf, inactive leaf, or both
- Optional painted or plated finishes

Electronic Access Control

DORMA's line of access control hardware complements our full line of door controls and exit devices. Electromagnetic locks, including specialized locks, are designed for such applications as gates, cabinets and sliding doors. Also available are shear locks, delayed egress locks, power supplies, electric strikes, and programmable digital keypads. Completing this line of equipment are desktop consoles along with push-button and key switch combinations.

Electromagnetic Locks



DORMA Electromagnetic Locks are available for push- or pull-side mounting on wood, steel or aluminum doors and frames. Dual voltage (12 VDC and 24 VDC) is field-selectable. These locks are ideal for openings

that require extra security and the ability to integrate with the total door system.

Positive, instantaneous, fail-safe operation is guaranteed, without moving parts to bind or wear. The magnets are virtually maintenance-free, even under the heaviest traffic demands. The interlocking mounting plate design provides frame reinforcement for integrity and quick mounting with standard screws. The lock has no permanently attached cable, since the wires are pulled into the magnetic lock after frame mounting.

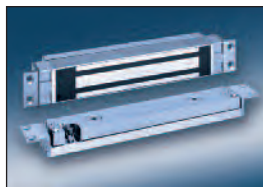
Recommended Applications:

- Education • Dormitories • Health Care • Public • Retail
- Religious • Amusement • Transportation • Warehouses
- Offices • Hotels • Automotive • Manufacturing

Configuration Options:

- Variety of models available
- 12 VDC or 24 VDC
- Various finishes available
- Mounting accessories available

Shear Locks



The EMSL-2000 Series Micro Shear and EMSL-2700 Series High Shear locks use an innovative locking design that incorporates a special alloy steel for greater durability and strength. The field adjustment capabilities

of these advanced locks ensure proper operation after final installation alignment. The EMSL Series shear locks also offer a field adjustable 1 to 5 second auto-relock delay timer.

Recommended Applications:

- Education • Dormitories • Health Care • Public • Retail
- Religious • Amusement • Transportation • Warehouses
- Offices • Hotels • Automotive • Manufacturing

Configuration Options:

- Variety of models available
- Optional finishes
- Mounting kit options
- Accessories available

Delayed Egress Electromagnetic Locks



DORMA Delayed Egress Locks meet NFPA Life Safety Code 101, Special Locking Arrangements. These U.L. listed, self-contained systems provide an alarm output contact for remote signaling. This feature makes it ideal for deterring shoplifting, employee theft, and wandering patients.

Recommended Applications:

- Education • Dormitories • Health Care • Public • Retail
- Religious • Amusement • Transportation • Warehouses
- Offices • Hotels • Automotive • Manufacturing

Configuration Options:

- Grade 1 Audible/Voice model
- Single or tandem lock model
- Locking arrangement options available
- Optional finishes

Access Control Accessories

DORMA offers a range of access control accessories to complement its entrance system products, including:

- KS5 & KS8 Series Key Switches
- PB Series Switches and indicator lights
- AC-217, AC228, and AC225 Programmable Digital Keypads
- Motion sensors, monitor strikes, keypads, door position sensors, power transfer devices, and timers/relays

Electric Strikes

Certified to ANSI/BHMA A156.31 Grade 1, the DORMA Electric Strike works with all cylindrical locksets, with most mortise locksets or exit devices, and with narrow door stile locks. Features include field-selectable voltage (12/24 VDC) and function (fail-secure/fail-safe). The DORMA Electric Strike is rated UL10C 3 Hr and is burglary-resistant with all stainless steel parts.



Recommended Applications:

- Education • Dormitories • Health Care • Public • Retail
- Religious • Amusement • Transportation • Warehouses
- Offices • Hotels • Automotive • Manufacturing

Configuration Options:

- Wide range of strike plates
- Monitoring options include latch bolt, latch keeper, and dead bolt
- Variety of finishes

Power Supplies



DORMA's Power Supply features field-selectable output voltage and is available in junction box sizes to fit your application needs. The RF option adds a built-in battery charger, output load regulation and input line filtering. The Power Supply control modules and options provide the necessary features and functions to meet virtually any application.

Recommended Applications:

- Anywhere electronic locking devices are used

Configuration Options:

- Variety of enclosure sizes
- 12 VDC or 24 VDC field selectable in most models
- Numerous power output options
- Additional optional power/control modules and accessories
- Class 2 wiring when output is less than 3 Amp

Many access control accessories are available, including:



Keypads
AC-217



Monitor Strikes
Ten variations offered



Door Position Sensor
DPS-11

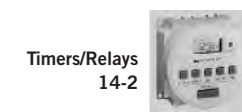


Motion Sensors
MS-1



75200

Power
Transfer
Devices



Timers/Relays
14-2



DORMA



DORMA Architectural Hardware
DORMA Drive, Drawer AC
Reamstown, PA 17567-0411
Telephone: (800) 523-8483
Facsimile: (800) 274-9724
E-mail: archdw@dorma-usa.com

DORMA Canada
1680 Courtney Park Drive, Unit 13
Mississauga, Ontario L5T 1R4
Telephone: (800) 387-4938
Facsimile: (905) 670-5850
E-mail: sales@dormacanada.com

DORMA Mexico, S. de R.L. de C.V.
Astrónomos 28, Col. Escandón
Mexico, D.F. 11800
Del. Miguel Hidalgo
Telephone: (52+55) 5272-6937
Facsimile: (52+55) 5272-6948
Email: operacion@dorma.com.mx

www.dorma-usa.com

DORMA reserves the right to improve products
and change specifications without notice.
4.12CT 2.5M 07000340
Printed in the USA